



 **PIMAR**
ITALIAN LIMESTONE

ITALIAN
STONE FACADE STYLE



INDEX

<i>LIMESTONE FACADE</i>	<i>7</i>
<i>RESIDENCES, PALACES, VILLAS</i>	<i>9</i>
<i>HOTELS, SHOPPING MALLS AND PUBLIC BUILDINGS</i>	<i>20</i>
<i>COMBINATION OF THE LIMESTONE WITH OTHER CLADDING MATERIALS</i>	<i>33</i>
<i>THE STRENGTH OF DETAILS</i>	<i>37</i>
<i>ABOUT THE LIMESTONE</i>	<i>42</i>



PIMAR
ITALIAN LIMESTONE

ITALIAN
STONE FACADE STYLE



PIMAR
ITALIAN LIMESTONE

ITALIAN
STONE FACADE STYLE

- *Large areas of Limestone quarries and latest technologies in the field of the extraction and working of the stone.*
- *Production of millions of square meters of products every year.*
- *Hundred of sites on different continents-from private villas to palaces and skyscrapers*
- *The best architects and designers in the world- Daniele Morelli , Philippe Stark, Luca Scacchetti, Alvaro Siza, Renzo Piano and many other stars of modern architecture.*
- *Almost two hundred years of working experience*
- *Specialized staff at the highest level*

These are the global abilities of the company PIMAR.

This is what allows Pimar to be the undisputed leader in the field of cladding of façades with the Natural Limestone.

The works that have been presented in this catalogue give an idea of the wide possibilities of the Natural Stone and the unique beauty of the material in the right hands.

*www.pimarlimestone.com
www.pimardesign.com*



THE STONE FAÇADE

One can argue endlessly about what kind of material is used for the façade and about how a real ideal house should look like. All such disputes are merely attempts to find an alternative to the Natural Stone. This search have been going on for more than two thousand years. All discussions agree on one thing – the best possibility is just Natural Stone.

The façade is the “face” of the building that reflects the status, the style, the habits and the way of life of the owner. A stone façade is the best testimony of value and success.

The Italian style and the ability to work with

Natural Stone have been ruling for centuries. This is the perfect combination of materials and architecture that goes beyond fashion.

The Natural Stone not only is a practical and durable material but also a status. Palaces, castles, villas, estates have been built with the Natural Limestone and continue to be built by people who occupy a prominent position in society.

The representative function of the Natural Stone façade is repeatedly increasing, also when it comes to public and commercial buildings. Indeed, the Natural Stone, as no

other material, informs us about the level of hotels, skyscrapers, or shopping malls. The use of Natural Stone, as well as a single architectural detail enhances the status of the building and its commercial value.





RESIDENCES PALACES VILLAS

VILLA AT THE SEASIDE

realized in 2007 -2008

CASTLE BY THE SEASIDE

realized in 2010-2011

FAMILY ESTATE

realized in 2007

RESIDENCE

realized in 2004-2006

ESTATE

realized in 1999-2000

CASTLE IN THE FOREST

realized in 2005-2006





ETERNAL VALUES

An elegant and refined villa in the classic Italian style is remarkable for its harmonious combination of design and material. The architects have succeeded in the full revelation of all the possibilities and capabilities of the stone in a building with not too big dimensions.

The villa looks incredibly light – the chamfered wall cladding, developed frames, a four Corinthian columns supported portico and the coupled windows make the façade easily understandable .

The main entrance is designed in the form of arc: the front door and the two gates which are symmetrical to both sides of the door are made of wrought iron and they beautifully complement the stone.







CASTLE AT THE SEASIDE

This is a luxurious and romantic castle that stands at the seashore. High plinth of split stone originally combines with the main levels of the smooth stone. The classical light Beige color of the Pimar Limestone hypnotizes. Windows and doors are painted the same color too.

The Pimar company's traditional attention to details and their scrupulous study- the curved cladding which is ideally projected and frames on the balconies, important keystones in the openings, carved shelves of 120 kg each – all this tells of a great ability to work with the stone.





THE PRESERVED TRADITIONS

It's a remarkable example of the use of the stone and its ability to mimic the ancient masonry.

To the left (England) there is an ancient (early nineteenth century) part of the building covered with local stone, which has been darkened with time. The modern extension stands on the right of the old part. The ground floor of the annex is covered with the PIMAR limestone in tumbled style and matched to the original stone in the format and color. The first floor is covered with a light-colored stone.



ILIRIA HOTEL
2010





PIMAR
ITALIAN LIMESTONE

*ESTATE
realized in 1999-2000*



THE ELEGANT LUXURY

A perfect solution to the stone façade, where the emphasis is revealed by the well-developed molded frames made of PIMAR Limestone: the cornice - around the perimeter of the building and the string-course - on the walls protruding from the main floor.

An interesting detail is the combination of stone and metal - the railings of wrought iron worked on the windows, fences on balconies and terraces, the shelves which are attached to the front of the main entrance, give to the façade a greatest additional grace.



CASTLE IN THE FOREST

For the design of the façade, the style of a romantic castle was taken as a reference. The building is located on a site with the ground of a harsh relief, which has determined the presence of a high baseboard. The coating of the walls with light-colored stone was needed to soften the austere and massive granite plinth and this was achieved through the use of carved stone elements on the openings of the arches.

The combination of the building with the surrounding forest was underlined with the wrought iron railings of the balconies on the first floor, the main pattern of which became the chestnut leaf.

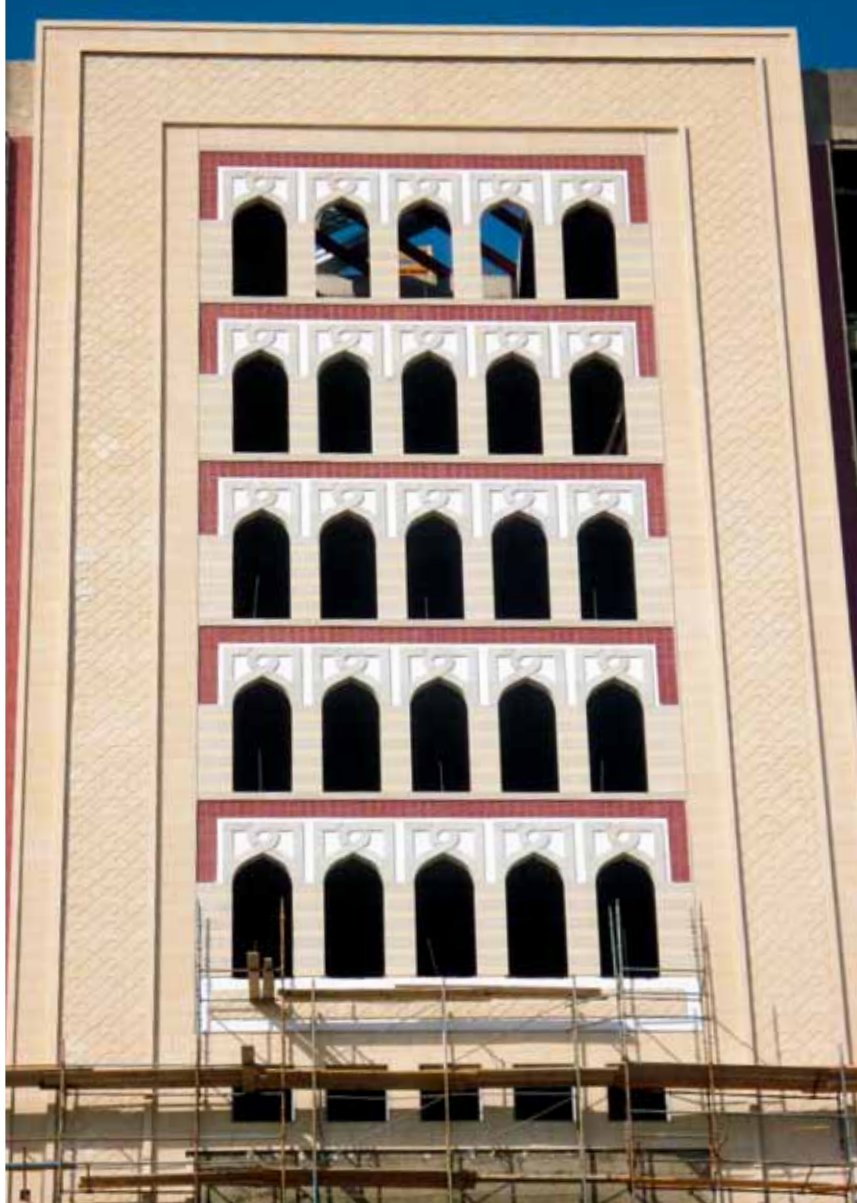
PIMAR
ITALIAN LIMESTONE

CASTLE IN THE FOREST
realized in 2005 - 2006





RESIDENTIAL COMPLEX
2008



HOTEL SHOPPING MALLS AND PUBLIC BUILDINGS

RESIDENTIAL COMPLEX
2008

SHOPPING MALL
2005

EOS HOTEL, arch. LUCA SCACCHETTI
2008

OFFICIAL HOUSE
2002-2004

HILTON GARDEN INN HOTEL
2009-2010

LA PERLA HOTEL
2007

SHOPPING MALL
2006-2007

SHOPPING MALL
2010

SHOPPING MALL
2010-2011

HERST TOWER , SKYSCRAPER
2002



The downtown shopping area is quite distinct from the office area. The large shopping gallery is covered with the beige Limestone that creates a sort of sense of comfort for visitors during the hottest and rainy days. In addition, the gallery cladding gives the impression of a luxury shopping mall and, therefore, increases the status of the facility and its commercial value.

The very issue of the natural stone cladding not only is a testimony of the taste and the financial possibilities of the owner, but also of the status, the style, and of a certain level of the building.



SHOPPING MALL
2005

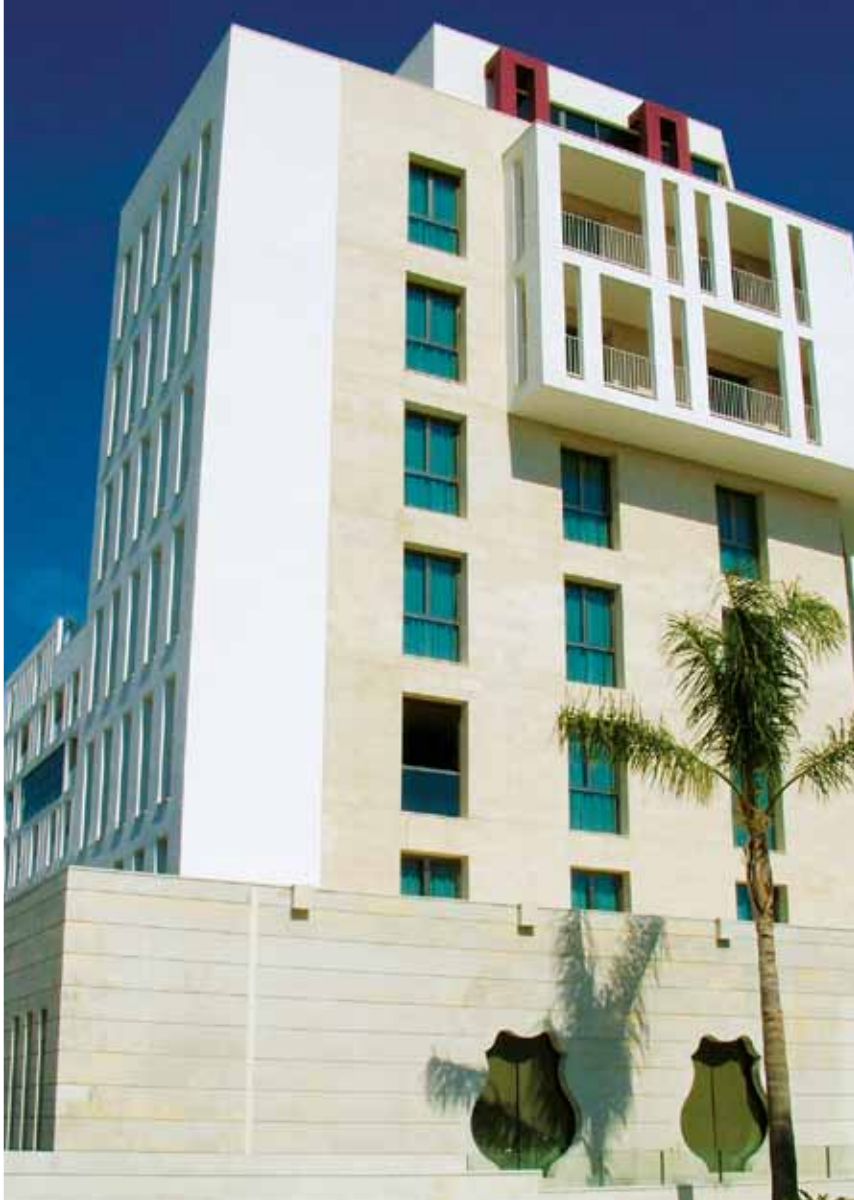


The project of the hotel in Lecce was designed by the famous Italian architect Luca Scacchetti in collaboration with PIMAR. The facade was covered with a deeply hammered stone that gives the building a sense of solidity and reliability. A simple solution of the asymmetry of the facade elements is completed with an original configuration of the faces of the individual slabs.

The main idea consists in the combination of the two types of finishing of stone, the hammered one and the smooth one.



*HILTON GARDEN INN HOTEL
2009-2010*









An «A class» shopping mall shows the possibilities of the natural Limestone as an excellent material for the building of modern architectural and technical solutions.

The PIMAR Limestone was used as the material that corresponds to the class of the building, and the ventilated façade allows the company that manages it, to save on heating and cooling of the building.



SHOPPING MALL
2006-2007



It 's another example of a shopping mall façade, where the PIMAR Limestone was chosen as the quality material in different sizes and grouped in horizontal bands of various heights.



SHOPPING MALL
2010



The Pimar Limestone, thanks to its properties is often successfully used for the coating of skyscrapers also.





THE COMBINATION OF STONE WITH OTHER COVER- ING MATERIALS

The Natural Limestone, as no other material perfectly combines with other coating materials. It allows to create the widest variety of solutions for the decoration of façades.

Padded doors and windows, cornices, corner elements made of stone turns the usual façade covered with bricks, into an elegant façade with the spirit of Andrea Palladio or of the English classic-style buildings.

The same elements are precisely the key elements of the façades with the walls plastered on the style of Northern Italy.

The Limestone has been beyond fashion for a thousand years, and it is suitable for any style. Indeed the Limestone became precisely a symbol of reliability, robustness and good taste.









THE STRENGTH OF DETAILS

The importance of details cannot be underestimated, because they are the very elements that create the impression and style. The decorative elements of the buildings should be well seen not only at a certain distance, but above all up close. Therefore besides the well chosen material, the quality of machining of an item has also a great importance. Whether it's about a meticulously crafted Corinthian balustrade or an «Antique Opus» -style flooring, the PIMAR company perfectly deals with the tasks entrusted to it. The plasticity and ductility of the Limestone help it in doing so but also its uniform color that highlights the sharpness of straight lines and the smoothness of the curved lines.











SHOPPING MALL "VULCANO BUONO"
arch. Renzo Piano

ABOUT THE LIMESTONE

The famous stone of Southern Italy - Italian Limestone - is a stone that has absolutely unique characteristics and properties. It's an oolite Limestone with uniform structure and the specific weight of 1634 kg/m³ and it's beige, gray or white colored- these words and numbers do not say anything to the people who are non-experts in the field of building and petrography.

At the same time, an experienced architect or designer immediately recalls the "flowered" Italian pearl of Baroque - The Church of Santa Croce in Lecce (XVI-XVII century), the magnificent carved façades and interiors that are made entirely of Limestone, and that for this reason have fascinated for centuries both tourists and connoisseurs of art and stone.

The Italian Limestone is all this: villas, estates, shopping malls and luxury hotels in Italy, France, England, Germany, elegant residences in America and luxurious palaces of the sheikhs in the UAE, these and many others are the projects that the Pimar company has realized and continues to realize with a high level of professionalism.

Origin. The Limestone is a sedimentary rock of organic origin. Tens of millions of years ago in the prehistoric seabed there were huge colonies of organisms whose shells formed high sediment. Under the pressure, with the Earth's temperature and with the passing time the shells crystallized and turned into a homogeneous rock called Limestone.

Technical and technological characteristics. The Italian Limestone is a solid, light, and frost-resistant stone. It's easy to work with and to be carved with complex cuts and finishes and it maintains the carvings over the time. Over the time, its strength increases under the action of ultraviolet light.

The lightness of Italian limestone (40% lighter than granite and marble) is due to its porosity (32.6%). About half of the pores are «closed» and the «open» ones in their majority are capillaries. The properties of water in capillaries is to remain in the liquid state even in temperatures down to -70°C , and this gives the stone a unique frost resistance - even after 70 cycles of freezing and thawing the loss of resistance is of 1,7%, which is 40 (!) times lower than the allowable standards for the natural Limestone. Due to the high coefficient of porosity, the Italian Limestone is permeable, and this makes it an ideal material for systems of ventilated façades.



LAVORIAMO
DEVELOPING
PER IDEE
CHE FANNO
IDEAS THAT MAKE HISTORY
STORIA.



CONFINDUSTRIA LECCE

Head Office:

Pi.MAR s.r.l. via Manzoni, 32
73020 Corsi (Lecce) - Italy

Office Production:

S.S. 16 Lecce Maglie
uscita Melpignano Stazione
73020 Melpignano (Lecce) - Italy

Tel. (+39) 0836.48.32.85
(+39) 0836.42.96.73/42.65.55
Fax. (+39) 0836.42.99.26

www.pimarlimestone.com
info@pimarlimestone.com

www.pimardesign.com
info@pimardesign.com

